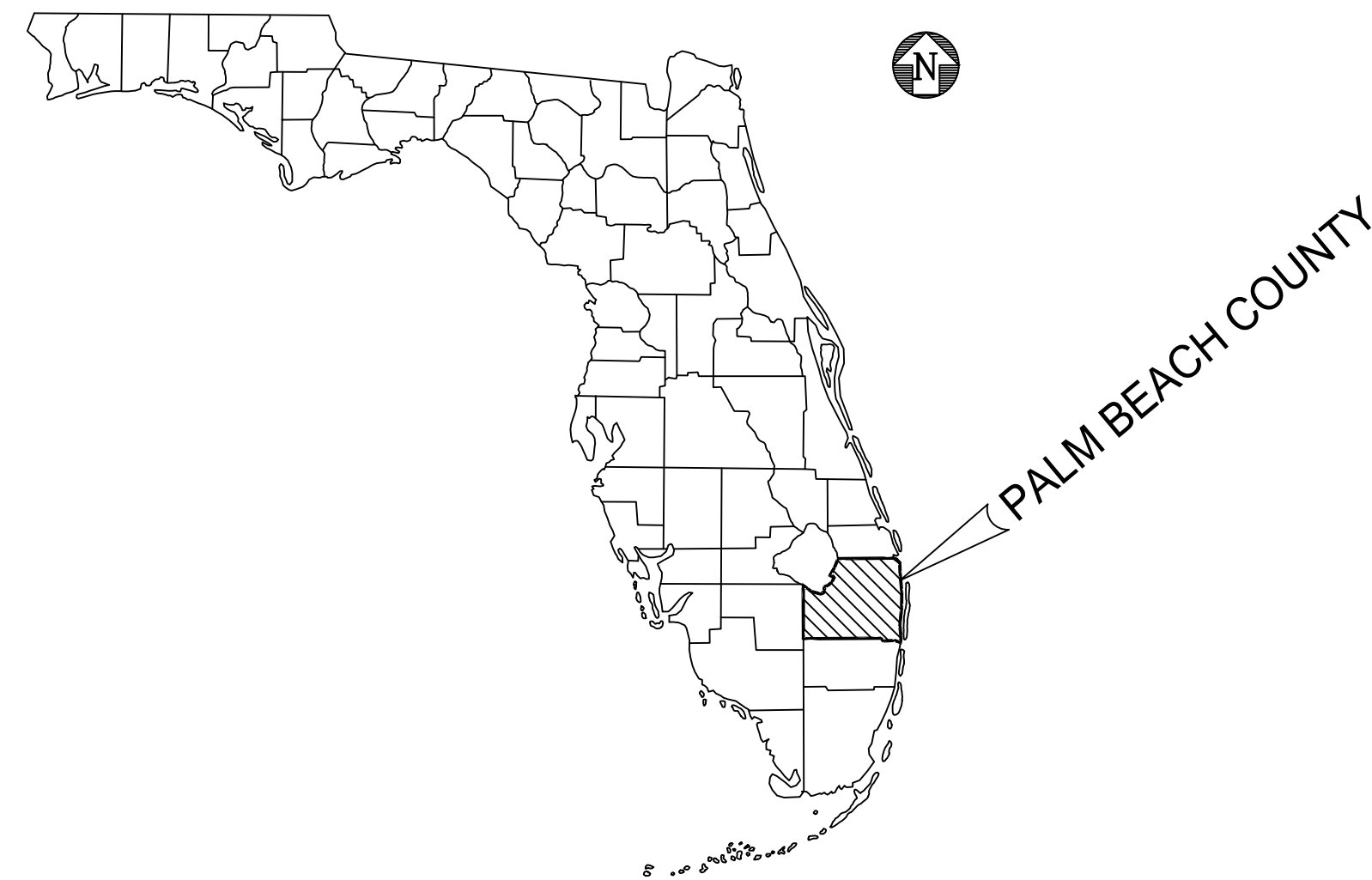
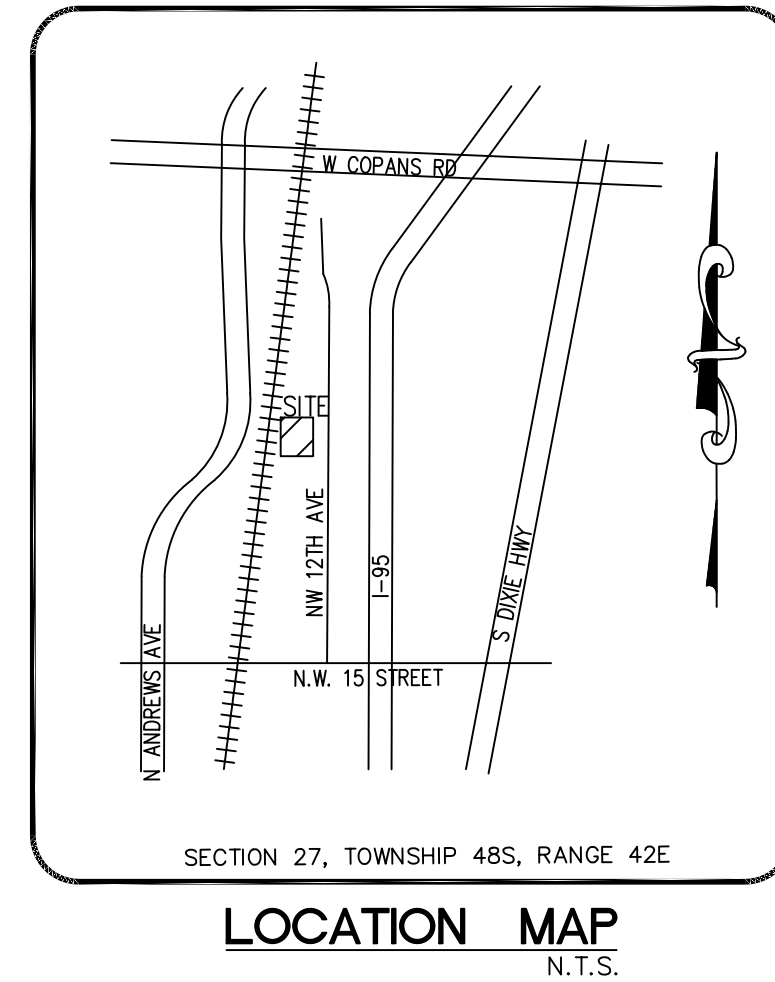


PREPARED FOR

CITY OF POMPANO BEACH

OCTOBER 2022



DRAWING INDEX:

1. COVER
2. DEMOLITION AND EROSION CONTROL PLAN
3. PAVING, GRADING AND DRAINAGE PLAN
4. WATER AND SANITARY SEWER PLAN
5. SIGNING AND PAVEMENT MARKING PLAN
6. TYPICAL SECTION PLAN
7. DETAILS
8. DETAILS
9. DETAILS
10. NOTES

90%
SUBMITTAL

ADAM SWANEY, P.E., PROFESSIONAL ENGINEER LICENSE NO. 72235.
THIS DOCUMENT HAS BEEN ELECTRONICALLY SIGNED AND
SEALED BY ADAM SWANEY, P.E. USING A SHA-1 AUTHENTICATION CODE.
PRINTED COPIES OF THIS DOCUMENT ARE NOT CONSIDERED SIGNED AND
SEALED AND THE SHA-1 AUTHENTICATION CODE MUST BE VERIFIED ON ANY
E L E C T R O N I C C O P I E S .

811 DRC

Know what's below
Call before you dig

200409.01

12/07/2022

SUBMITTAL ONLY

DATE	PROJECT ENGINEER	PROJECT MANAGER	CHECKED
10			

REVISIONS		
NO.	DATE	REMARKS
BY		

© COPYRIGHT 2022 BY
 ENGENUITY GROUP, INC. THIS
 DRAWING IS PROVIDED FOR
 INFORMATIONAL PURPOSES ONLY,
 UNLESS SIGNED AND SEALED BY
 A LICENSED PROFESSIONAL
 ENGINEER REPRESENTING
 ENGENUITY GROUP, INC.

Digitally
signed by
Adam
Swaney
Date:
2022.11.01

08:21:37
-04'00'

MARTIN BROWER INDUSTRIAL
1661 NW 12TH AVENUE
POMPAÑO BEACH, FLORIDA
COVER



DATE	10/02/2022
PROJECT ENGINEER	RB
PROJECT MANAGER	ACS
CHECKED	ACS